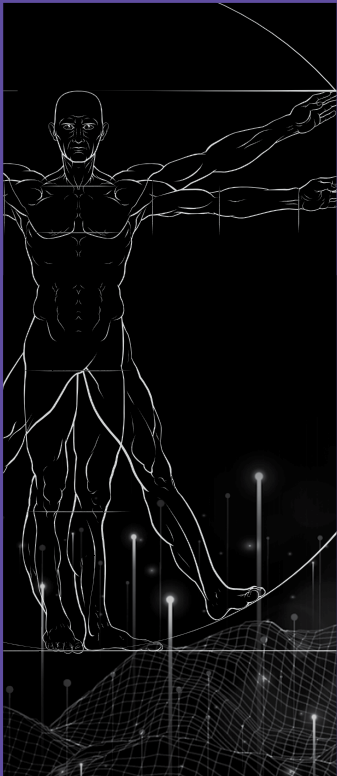


H



A

HUMANITIES,
ARTS AND
SOCIAL
SCIENCES



SS

UNDERSTANDING THE WORLD BEFORE DESIGNING IT

Why study the humanities, arts and social sciences (HASS) in a technology and design focused school, you may ask. Well, the answer is simple: Because everything we do is human-centric.

WITH A STRONG FOUNDATION IN HASS, OUR STUDENTS WILL BE EQUIPPED WITH A COMPREHENSIVE UNDERSTANDING OF THE WORLD THAT THEY ARE CREATING, DESIGNING AND BUILDING FOR. WHETHER DEVELOPING A GADGET, AN APP, A SUPPLY CHAIN OR A CITY, UNDERSTANDING THE SOCIAL, CULTURAL, POLITICAL AND ECONOMIC DIMENSIONS OF OUR WORLD IS CRITICAL SO THAT THEIR INNOVATIONS ARE SUITED TO SOCIETY'S NEEDS.

By offering unique learning experiences that integrate the disciplines of HASS with engineering and architecture, our students are set to acquire the capacity for self-reflection and critical thinking in order to nurture leaders deeply aware of the social role and impact of innovations in the field of technology and design.

CURRICULUM

In HASS courses, students acquire robust, demonstrable **critical thinking and communication skills** that make them attractive to future employers, leaving them well-placed to take on leadership roles in their careers. For instance, in “Leadership and Organisation Management”, students develop the capacity to analyse, manage, and lead organisations and tackle management problems.

HASS also gives students the **global, social and cultural literacies** they need to succeed in a complex, multicultural society and region. By introducing students to theoretical tools and conceptual frameworks from the social sciences, HASS enhances the problem-solving skills of our graduates, enabling them to handle real-world problems better. For instance, in “Urban Theory,” students learn how to contextualise empirical problems in urban environments and see those challenges holistically as architects, engineers, planners, and policymakers.

TRAILBLAZING A BETTER WORLD BY DESIGN.



HASS CORE SUBJECTS

Throughout their time in SUTD, all undergraduates take up to seven HASS subjects, with two as core subjects in Terms 1 and 3.

SOCIAL SCIENCES CORE

Understanding Behaviour, Culture and Society

HUMANITIES CORE

Global Humanities: Literature, Philosophy and Ethics

HASS MINORS

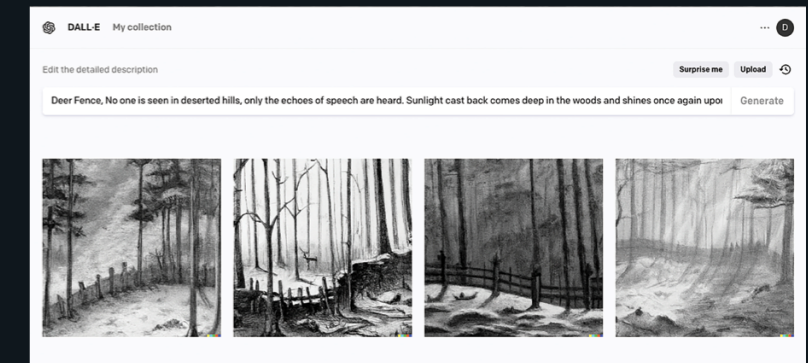
✘ DESIGN, TECHNOLOGY AND SOCIETY

✘ How will design outcomes impact us as individuals, our societies and the environment?

Students learn to identify and respond critically, creatively and constructively to the social, cultural, economic, political and psychological forces that drive design practice and technology development.

✘ DIGITAL HUMANITIES

✘ Our digital humanities electives take our computer scientists outside their textbooks and allow them to use their skills to solve real-world, fuzzy problems, such as analysing non-standardised language in social media posts or reconstructing damaged cultural artefacts using the latest 3D modelling techniques.



↑ Using DALL imaging technology to reimagine and bring classical Chinese poetry to life.

SELECTED HASS ELECTIVES

BROADENING MINDS, ILLUMINATING CONTEXT, FOSTERING COMMUNICATION.

HUMANITIES

LITERATURE AND ARTS

- Global Shakespeares
- Lyric Poetry
- The Chinese Lyrical Tradition: Arts, Literature and Landscape Design
- Performance: Design, Dramaturgy and Interpretation
- Moral Questions and the Contemporary Novel

DIGITAL HUMANITIES

- Introduction to Digital Humanities
- Equitable Tech: Reimagining Our Digital Infrastructures
- Digital Worlds, Space and Spatialities: Geographical Perspectives on Digitalisation

PHILOSOPHY

- Artificial Intelligence and Ethics
- Being in the World: From Homer and Heidegger to A.I.
- Leaders and Followers
- The Question of Technology
- Early Indian and Chinese Religion and Philosophy

URBAN STUDIES

- Financing Cities of the Future: Theory and Practice
- Transportation Policy and Technology in Urban Progress
- Urban Theory
- Urban Southeast Asia

HISTORY

- A History of Nuclear Strategy, Design, Technology, and Society
- Kings, Monks, and Merchants: A History of Asia before 1750
- Modern China: Pluralism, and Beyond Territoriality
- History of Surveillance in Modern Asia
- The Game of Histories
- The World Since 1400

SOCIAL SCIENCES

SOCIOLOGY

- Gender, Sexuality and Society
- Shaping Futures: Innovation, Work and Society
- Digital Sociology
- Who Gets Ahead? Sociology of Social Networks and Social Capital

PSYCHOLOGY

- Introduction to Psychology
- Human Behaviour, Technology and Design
- Psychological Approaches to Bilingualism

ANTHROPOLOGY

- Rice Cultures: Technology, Society, and Environment in Asia
- Unnatural Disasters
- Design Anthropology
- Design in the Anthropocene
- Interventions in Design, Technology and Society

RESEARCH METHODOLOGY

- Surveys and Experiments in the Social Sciences

BUSINESS, COMMUNICATION AND FINANCE

- Health Communication and Behaviour Change
 - Critical Management Studies
 - Geographies of Money and Finance
 - Leadership and Organisation Management
 - International Trade: Free Trade, Governance and Technology
- 

+++

**Chen Fusheng
Architecture
and Sustainable
Design alumnae,
Class of 2018**

“The knowledge from HASS broadened our horizons and guided us in becoming better creative individuals. My interest in the arts and social sciences, particularly Chinese Literature and Psychology, blossomed, which became a source of inspiration for my animation work. The Chinese Literature HASS elective enriched my understanding of history, literature and culture, thus providing substantial inspiration for my creative process. Apart from this, the Psychology class equipped me to create more creative, complex, relatable characters with depth. It was also helpful in understanding my target audience, creating more emotionally engaging and meaningful content that will resonate with them.”

FUSHENG’S FIRST ANIMATION, “A TADPOLE’S MUSIC JOURNEY” NOT ONLY WON MULTIPLE INTERNATIONAL AWARDS FROM 10 COUNTRIES, INCLUDING SINGAPORE, BUT WAS ALSO SHOWCASED AT THE HONOLULU MUSEUM OF ART IN HAWAII.

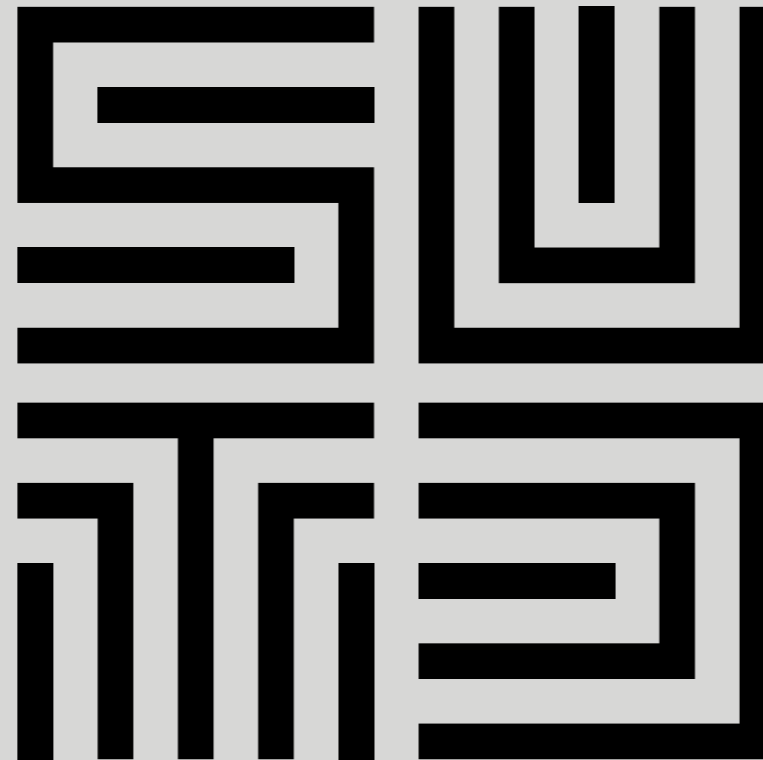
HASS FIELD TRIPS

Venture out of the classroom and learn through visiting museums, historical sites, key institutions and more.

PREPARE TO TAKE ON THE WORLD



TRAILBLAZING A BETTER WORLD BY DESIGN.



RESEARCH

HASS leverages the world-class expertise of our multi-disciplinary faculty to offer a holistic approach to complex global challenges. Our research champions a human-centric, interdisciplinary approach to design, offering insights into social, historical and cultural contexts, global perspectives and critical analysis of the societal impact of scientific and technological advancements. Our goal is to promote responsible innovation by deepening our understanding of human beings, societies and cultures, ensuring that the benefits of new technologies are fully realised for those whose lives are shaped by them.

OUTSTANDING EXAMPLES

✘ THE WORLD’S FIRST BILINGUAL GAME APP AIMED AT STAVING OFF DEMENTIA

Developed based on Professor Yow Wei Quin and her team’s hypothesis of the cognitive advantages of dual language use on older adults, the “Ami” (Advancing Mental Invigoration) 1.0 app currently supports multiple languages, including Mandarin, English, Malay, Tamil, Hokkien and Cantonese. It’s so user-friendly, even those who can’t read can play. The app has since drawn substantial societal interest from the healthcare sector with the launch of its prototype on Lions Befrienders’ Active Ageing Centre 1000 IM-OK Android devices.



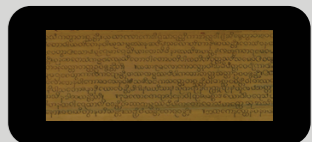
✘ VIRULENT ANIMALS OR UNSAFE MEAT?

Associate Professor Lyle Fearnley examines what drives consumer preference for live poultry and explores how wet markets in China can be redesigned to achieve food safety and quality.



✘ PRESERVING TRADITIONAL ECOLOGICAL KNOWLEDGE

Studying early Southeast Asian Buddhist writings about the natural world, Associate Professor Alastair Gornall uncovers and records the region’s fast-disappearing traditional ecological knowledge.



✘ AN ADAPTIVE COMPENSATORY FRAMEWORK – HOW SOCIAL COGNITION CHANGES WITH AGING

Professor Yow Wei Quin examines how the level of social cognitive functioning changes along with the structural and functional changes of the ageing brain and an individual’s life experiences.

HIGHLIGHTED BOOKS

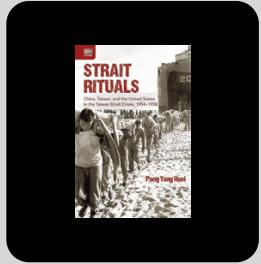
SHAPING THE FUTURES OF WORK: PROACTIVE GOVERNANCE AND MILLENNIALS



NILANJAN RAGHUNATH
McGill-Queen's University Press,
2021

In *Shaping the Futures of Work*, Assistant Professor Nilanjan Raghunath explores the impact of technological innovations on employment.

STRAIT RITUALS: CHINA, TAIWAN, AND THE UNITED STATES IN THE TAIWAN CRISIS, 1945-1958



PANG YANG HUEI
Hong Kong University Press,
2019

In *Strait Rituals*, Senior Lecturer Pang Yang Huei offers a new interpretation of the Taiwan Straits Crises and how conflict resolution developed between China, Taiwan, and the U.S.

URBAN ETHICS IN THE ANTHROPOCENE: THE MORAL DIMENSIONS OF SIX EMERGING CONDITIONS IN CONTEMPORARY URBANISM



JEFFREY K. H. CHAN
Palgrave Macmillan, 2019

In *Urban Ethics in the Anthropocene*, Assistant Professor Jeffrey Chan examines contemporary architectural and urban planning by considering ethical issues and moral experience.

GRANTS AND AWARDS

HIGHLIGHTED ARTICLES

“BALANCED BILINGUALISM AND EARLY AGE OF SECOND LANGUAGE ACQUISITION AS THE UNDERLYING MECHANISMS OF A BILINGUAL EXECUTIVE CONTROL ADVANTAGE: WHY VARIATIONS IN BILINGUAL EXPERIENCES MATTER.”

W. QUIN YOW AND XIAOQIAN LI
Frontiers in Psychology 6 (2015): 1-12

“THE ETHICS OF WORKING WITH WICKED URBAN WASTE PROBLEMS: THE CASE OF SINGAPORE’S SEMAKAU LANDFILL.”

JEFFREY KOK HUI CHAN
Landscape and Urban Planning 154 (2016): 123-131

“HIGH SPEED RAIL AND ECONOMIC DEVELOPMENT: BUSINESS AGGLOMERATIONS AND POLICY IMPLICATIONS.”

JIN MURAKAMI AND ROBERT CERVERO
In *High-Speed Rail and Sustainability: Decision-Making and the Political Economy of Investment*, ed. Blas Luis Pérez Henríquez and Elizabeth Deakin. London: Routledge, 2017

“THE INFLUENCE OF PARENTAL PRACTICES ON CHILD PROMOTIVE AND PREVENTIVE FOOD CONSUMPTION BEHAVIORS: A SYSTEMATIC REVIEW AND META-ANALYSIS.”

ANDREW Z. H. YEE
International Journal of Behavioural Nutrition and Physical Activity 14 (2017): 47

“DEMOCRATIZING FINANCE WITH ROBINHOOD: FINANCIAL INFRASTRUCTURE, INTERFACE DESIGN AND PLATFORM CAPITALISM.”

GORDON KUO SIONG TAN
Environment and Planning A: Economy and Space 53.8 (2021): 1862-1878

HASS faculty has been supported by various national and international grant-awarding bodies, including the Ministry of Education Academic Research Fund, National Institute of Education Office of Education Research Fund, Ministry of Health National Innovation Challenge Grant, Social Mobility Foundation, the Robert H. N. Ho Family Foundation, and the Fulbright Commission of the United States of America.



sutd.edu.sg



For enquiries:
sutd.edu.sg/prospectivestudent



SUTDsingapore



SUTDsg