

Students Spring 2019: Affifah Bte Ab Ghaphar, Ang Shing Yee Erica, Anirudh Gajendra Rathi, Chan Li Yu, Chen Rui, Cheong Yi Lei, Chia Sheng Wei, Chong Kar Wei, Chow Khoi Rong Clara, Dion Teo Jian Xian, Eileen Wong, Emma Lim Zi Xian, Fang Zixin, Jennifer Gautama, Joshua Tan Seh Kiat, Kok Shi Yun, Lee Xing Yun Mavis, Li Jiayi, Liang Xiuling Chloe, Lim Hui Yee, Lim Kian Chong, Loo Jun Wen, Low Hui An Shawn, Low Si Hong, Lun Ci Min, Mai Shengxian, Melissa Mak Li Ping, Miao Qian, Michelle Gouw, Nabila Larasati Pranoto, Ng Wen Qi, Nur Fadhilah Binte Nordin, Nurul Asyiqin Binte Mohd Zahrin, Odelia Shane Tan Jia Xian, Ong Hui Sin, Ong Jie Min, Ong Wueng Kee, Phang Li Wen Charlotte, Ryan Teo Jun Yan, Samantha Lim Shou En, Shoon Lei Khin, Soh Jia Ying, Sundaram Mohan Janani, Tan Shao Xuan, Tan Yuan Ling Rebecca, Teo Mei Qin Elizabeth, Teo Qian Yi Rilla, Tran Thi Thien Tam, Varshah Gunasagar, Wong Yi Xin, Yu Jiaxin, Zhu Wentao, Zou Chuchu

Winter 2019: Abdul Irfan Hadi Bin Amir, Adler Teo, Ahmad Rashidi Bin Razali, Arisa Teriyapirom, Cem Ataman, Chan Jia Qi Audrey, Chen Ran, Chen xinhan, Cher Jia Xi Jane, Clarissa Maharani Hartanto, Emir Hamzah Bin Mustafa Kamal, Goh Ee Yan Eion, Goh Min Rui, Grace Wong Xin Ying, Han Jing, Heong Kheng Boon, Ho Di Xiang Darren, Kelly Yeo Jing Er, Kiang Ching, Lau Ruiqi Rachel, Lim Hai Heng Lester, Lim Xin Yan, Lim Ying, Liu yimin, Mary Agnes Camille Villar Angel, Natalie Tsang Yan Ting, Ngiam Ju Jin Lucas, Nidhi Hegde, Nurul Nabilah Izzati Bte Rohaizad, Sim I-En Grace, Song Li Ying, Song qiuji, Song Tingxuan, Tan Jee Khang Benedict, Tan Yong Shin Matthew, Tay Boon Kiat, Teo Shao Tian, Thet Naung Oo @ Chi Jia Cai, Wang Qiaorou, Wesley Koh Zhi Peng, Wong Shu Miin Naomi, Wu xueyi, Xiang Xiaopeng, Xiao Yiming, Xavier, Yang junjie, Yeo Kai Lin, Zhang Guoxian, Zheng yuxin, Zhuo Feyan

Urban Housing Typologies

Course Lead

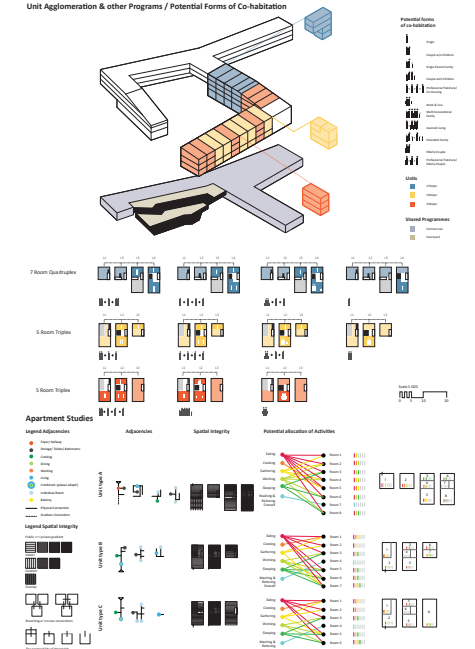
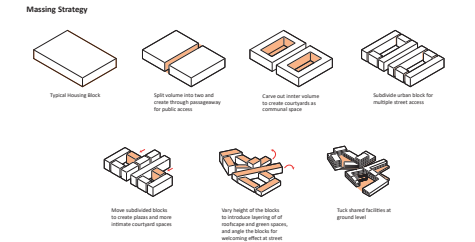
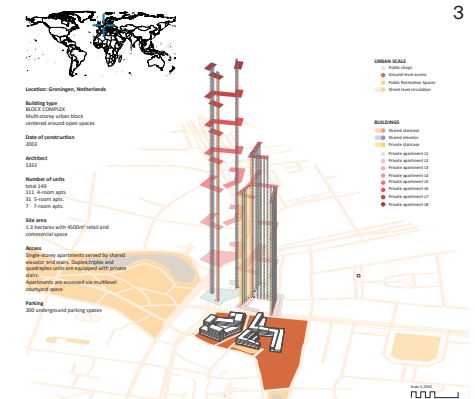
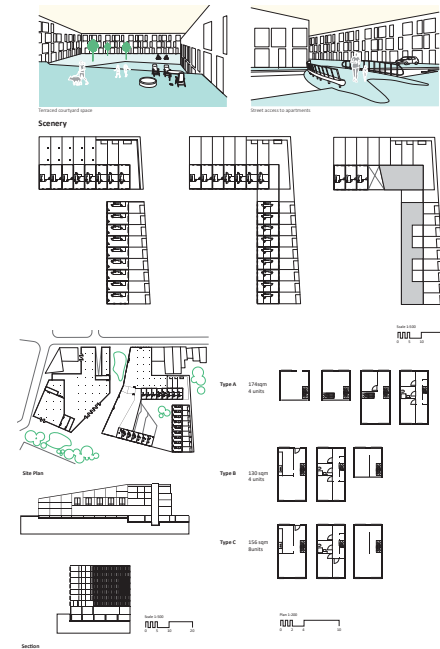
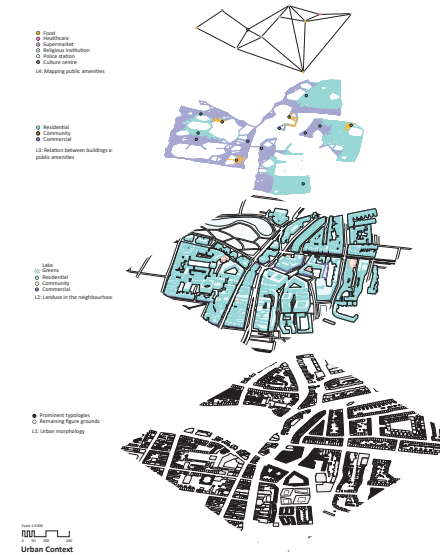
Oliver Heckmann

The course elective 'Urban Housing Typologies' discusses in lectures and seminars the essential conditions and strategies for habitation in cities. It concentrates on specific urban narratives, morphologies, scales, and densities, and debates the impact of innovative housing strategies and types for urban development as such. Doing so, the course places specific emphasis on typology as procedural expertise. Going beyond pure housing, it not only concentrates on the analysis of physical types at the scale of the city, the neighbourhood, the building, the 'unit' and the individual domain within but puts an essential focus on the programmatic and social sustainability and the 'social logic' of designs. The studies examine aspects such as topological and programmatic embeddings in urban territories, the spatio-social integrity of buildings across their various domains and the versatility and diversity of potential programs and forms of co-habitation.

Each student concludes the course with an individual case-study and an essay, deliberately combining two forms of architectural reflection: While the case studies are entirely drawing and diagram-based - as essential form of architectural enquiry by means of deciphering an architectural logic from a given reality - writing an essay expands their research further to a literature-based form of architectural thinking. Students are encouraged to formulate topics spanning across the complex aspects of urban habitation discussed: to formulate a relevant hypothesis and develop a provocative but coherent argument that aims for academic rigour but also reflects critical and pro-active thinking.

CASE STUDY 'Schots 1+2'

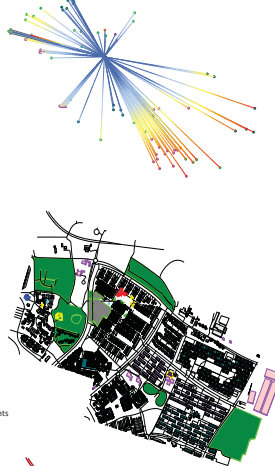
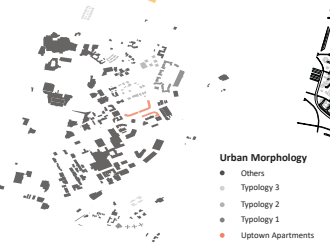
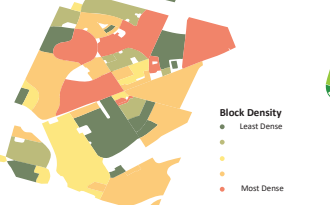
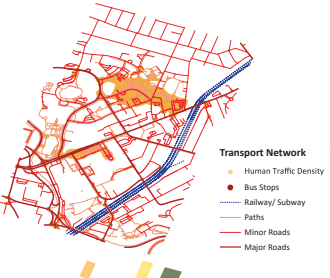
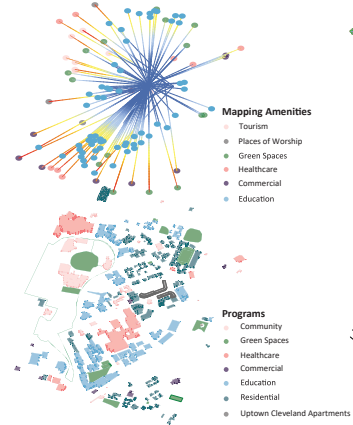
Amsterdam, NL 2003
Architect: S333
Affifah Bte Ab Ghaphar



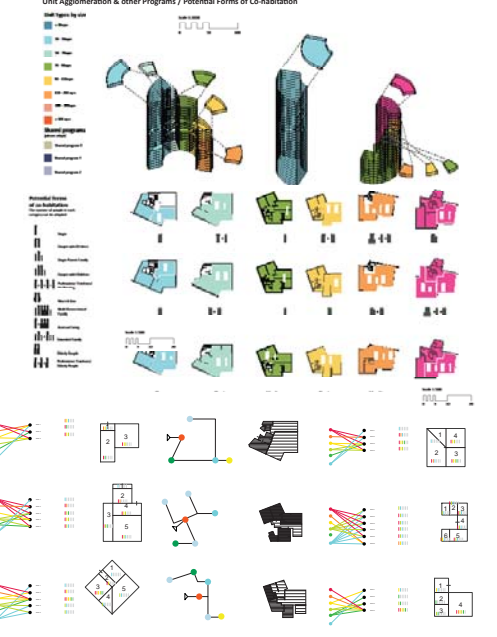
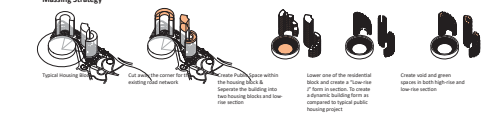
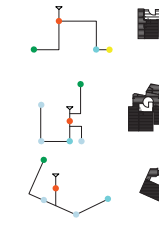
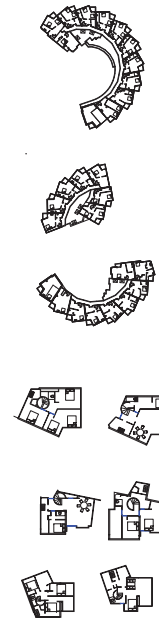
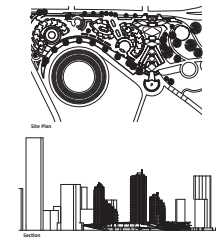
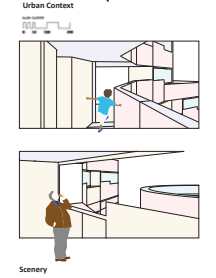
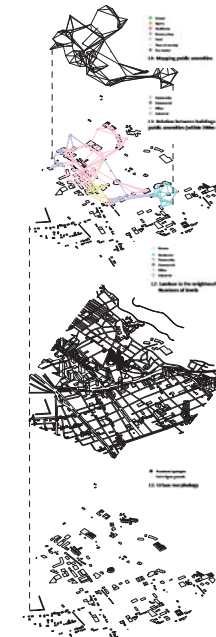
Urban context
'Uptown'
Cleveland, USA 2014
Architect: Stanley Saitowitz
Natoma Architects
Ngiam Ju Jun Lucas

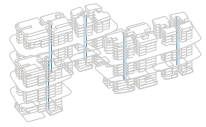
Urban context
'Galgebakken'
Albertslund, DK 1974
Architect: J.P.Storgard
Song Tingxuan

Urban context
'Puukuokka'
Helsinki, FI 2015
Architect: OOEPEAA
Goh Ee Yan Eion



CASE STUDY 'Torres del Parque'
Bogota, CO 1970
Architect: Rogelio Salmona
Lee Xin Yun Mavis

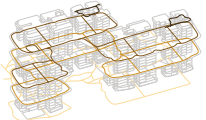




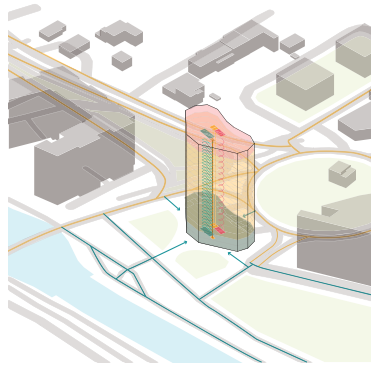
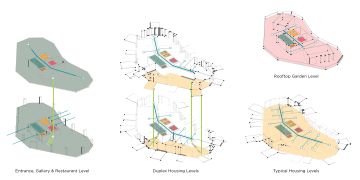
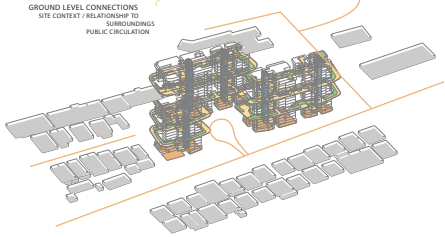
←Circulation system 'The Tembusu'
Singapore, SG 2016
Architect: Arcstudio
Tan Yee Khang Benedict



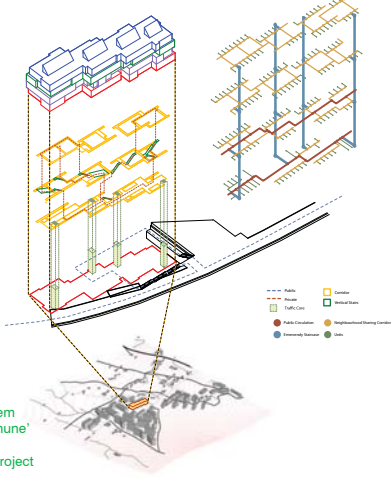
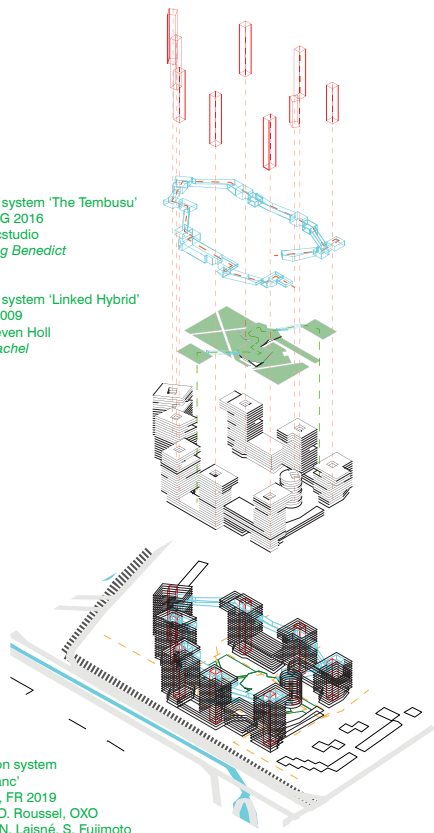
→Circulation system 'Linked Hybrid'
Beijing, CN 2009
Architect: Steven Holl
Lau Rui Qi Rachel



←Circulation system 'L'arbre Blanc'
Montpellier, FR 2019
Architect: D. Roussel, OXO
architects, N. Laisné, S. Fujimoto
Teo Shao Tian

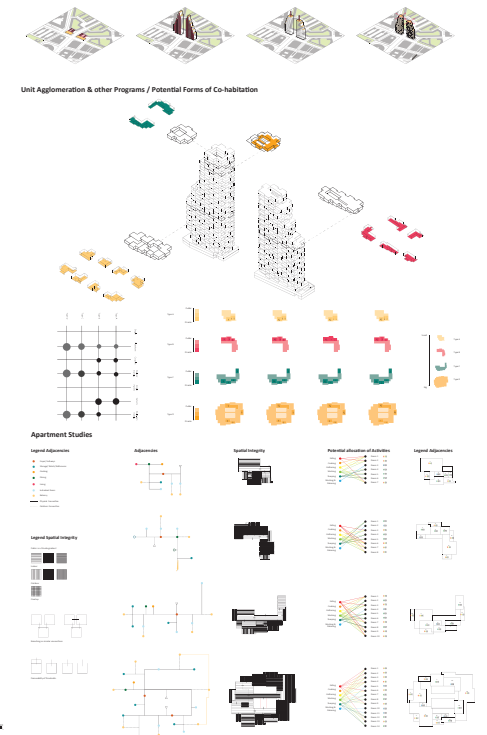
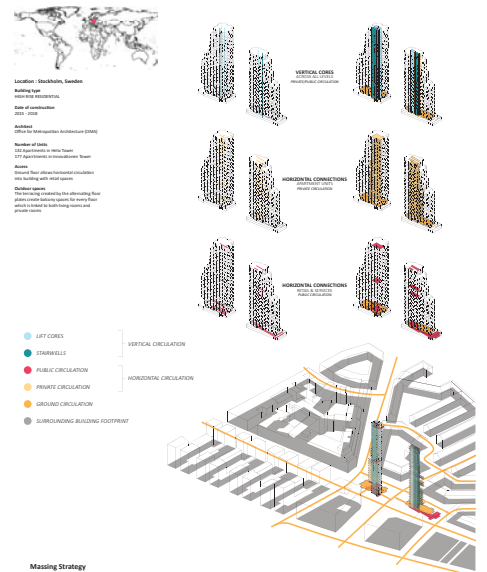
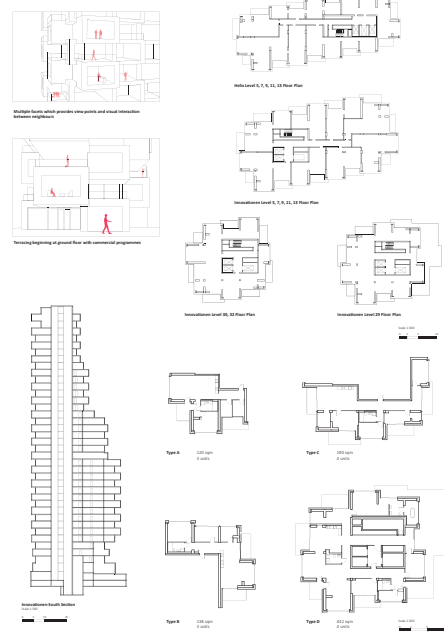
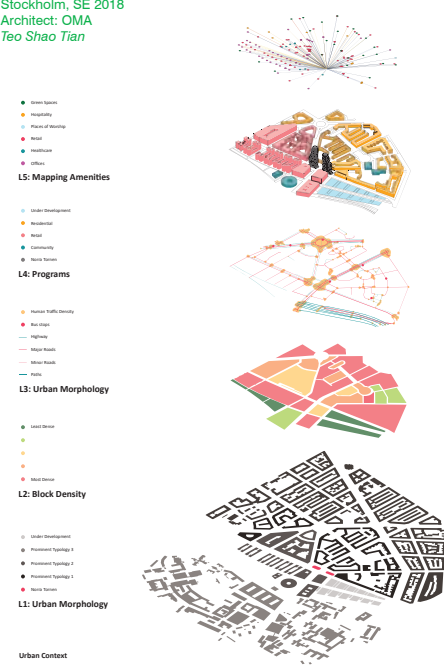


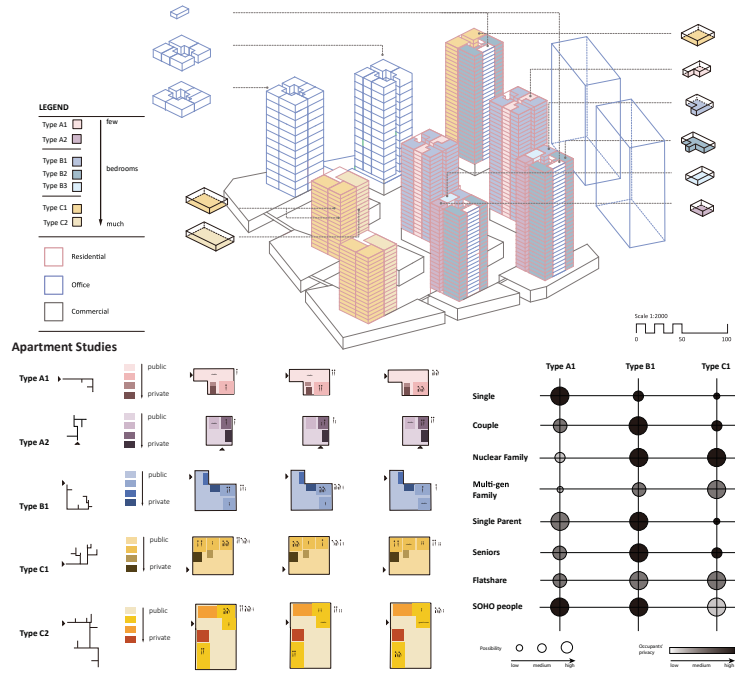
→Circulation system 'New Youth Commune'
Jilin, CN 2015
Architect: META Project
Song Qiuj



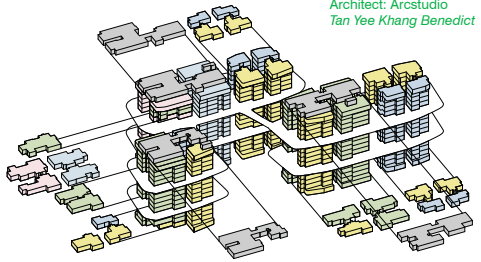
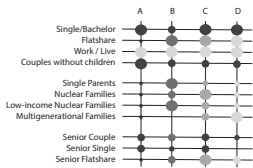
CASE STUDY 'Norra Tornen'
Stockholm, SE 2018
Architect: OMA
Teo Shao Tian

- Green Spaces
 - Hospitality
 - Cultural Activities
 - Retail
 - Residential
 - Offices
- L5: Mapping Amenities**
- Under Development
 - Retail
 - Hospitality
 - Community
 - Public Spaces
- L4: Programs**
- Service Facility Density
 - Retail Space
 - High Office
 - Medium Office
 - Mixed Office
 - Office
- L3: Urban Morphology**
- Urban Fabric
 - Green Space
 - Public Space
 - Street
 - Building Footprint
- L2: Block Density**
- Under Development
 - Residential Typology 1
 - Residential Typology 2
 - Residential Typology 3
 - Office Typology
- L1: Urban Morphology**

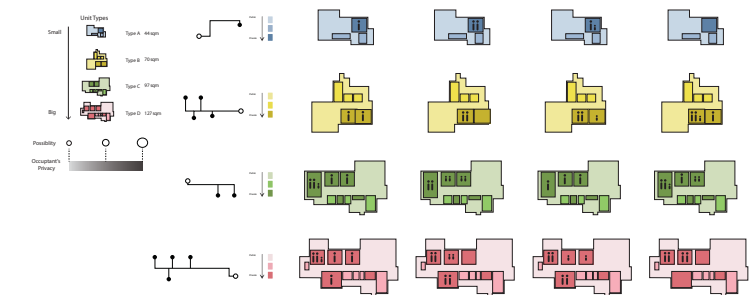




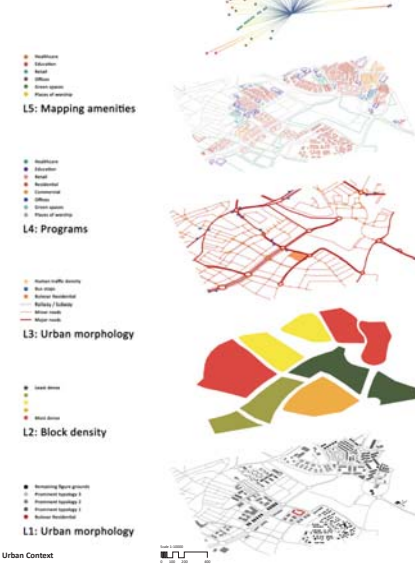
↑Unit Agglomeration / Potential Forms of Co-habitation
 'Jian Wai SOHO'
 Beijing, CN 2004
 Architect: Yamamoto & Fieldshop
 Wu Xueyi



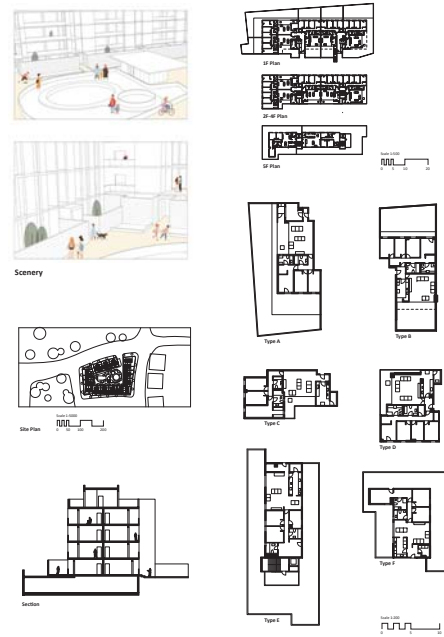
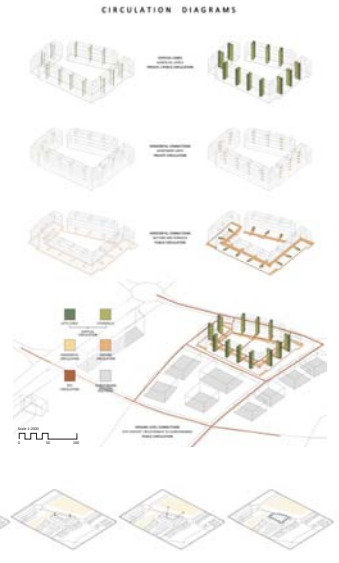
↓Unit Agglomeration / Potential Forms of Co-habitation
 'The Tembusu'
 Singapore, SG 2016
 Architect: Arcstudio
 Tan Yee Khang Benedict



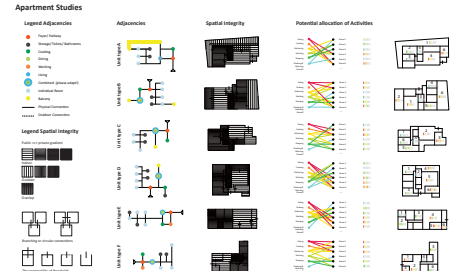
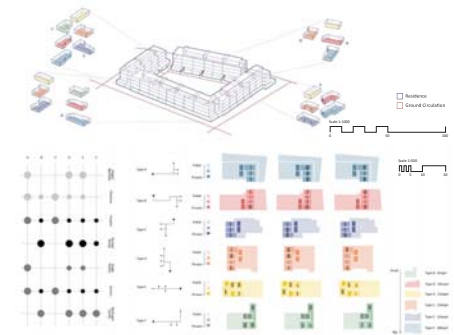
CASE STUDY 'Bulevar Residence'
 Sevilla, ES 2019
 Architect: Gabriel Verd/Buro 4 Arq,
 Liu Yimin



Location: Sevilla, Spain
 Building Type: Residential
 Urban Morphology: Urban fabric
 Number of units: 117
 Building height: 10-12 stories
 Completion: 2019



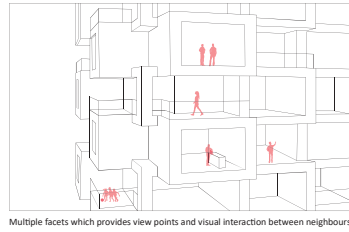
Unit Agglomeration & other Programs / Potential Forms of Co-habitation



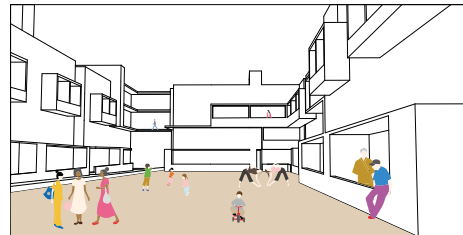
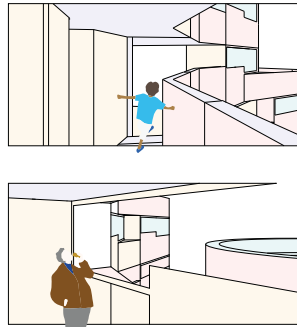


Open plaza area for retail, gatherings and place-making

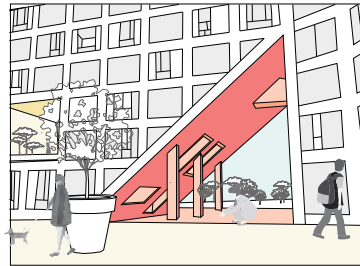
- Scenery 'Norra Tornen' Stockholm, SE 2018 Architect: OMA Teo Shao Tian
- ← Scenery 'One Santa Fe' Los Angeles, USA 2015 Architect: Michael Maltzan Lim Hai Heng Lester
- ↓ Scenery 'Bulevar Residence' Sevilla, ES 2019 Architect: Gabriel Verd / Buro 4 Arq. Liu Yimin
- Scenery 'Torres del Parque' Bogota, CO 1970 Architect: Rogelio Salmons Lee Xin Yun Mavis



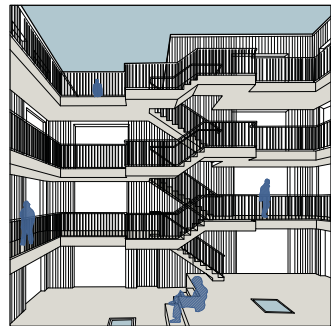
Multiple facades which provides view points and visual interaction between neighbours



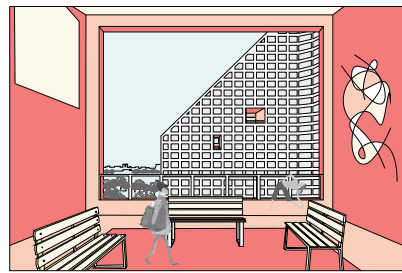
Internal courtyard as a communal space where neighbours can meet each other and children can play. Porches on the ground floor units act as another space where neighbours can meet.



Visual interaction between urban streetscape and communal areas created by carved out voids

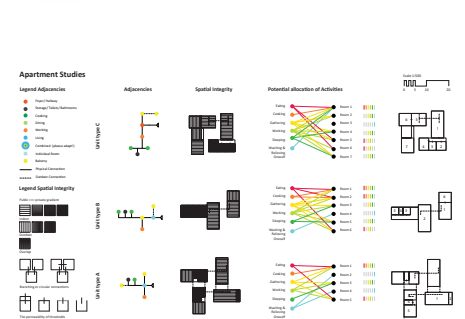
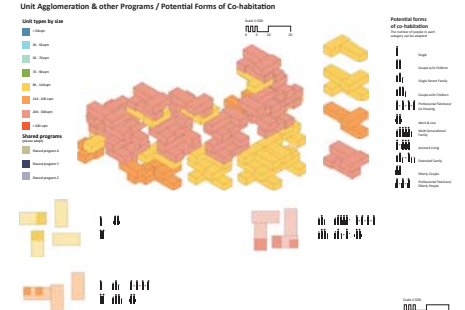
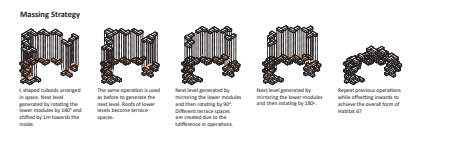
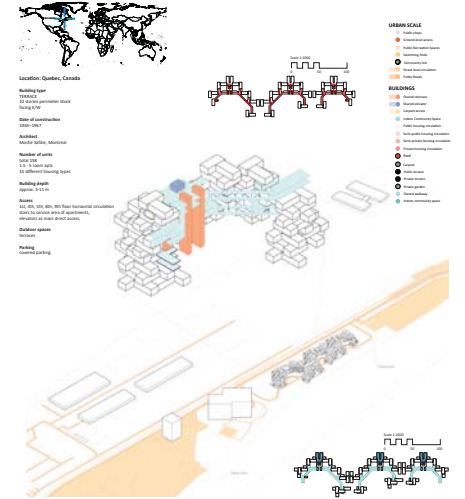
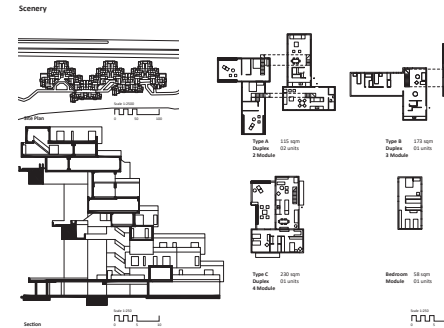
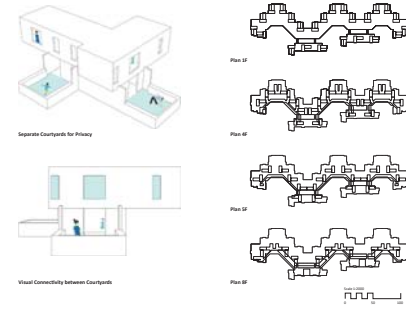
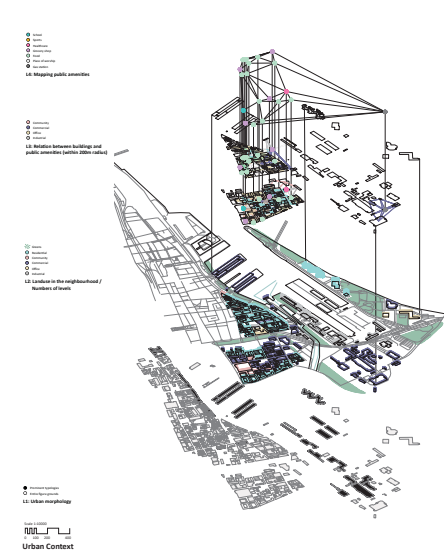


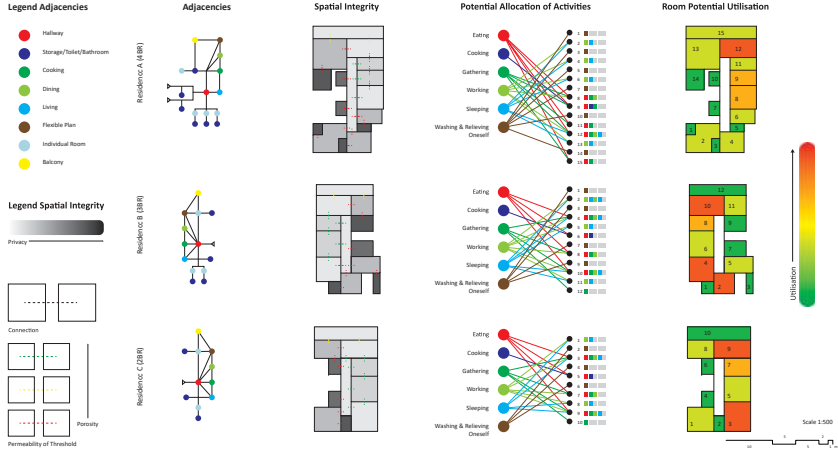
- ↑ Scenery 'House for the Fisherman of Tyre' Tyre, LB 2008 Architect: Hashim Sarkis Odella Shane Tan Jia Xian
- ← Scenery 'Green City Residential Building' Zurich, CH 2017 Architect: Adrian Streich Song Qiuji
- Scenery 'Amanora Future Towers' Pune, IN 2018 Architect: MVRDV Ng Wen Qi



Communal areas frame views of the apartment facade

CASE STUDY 'Habitat 67'
Montreal, CA 1967
Architect: Moshe Safdie
Joshua Tan Seh Kiat

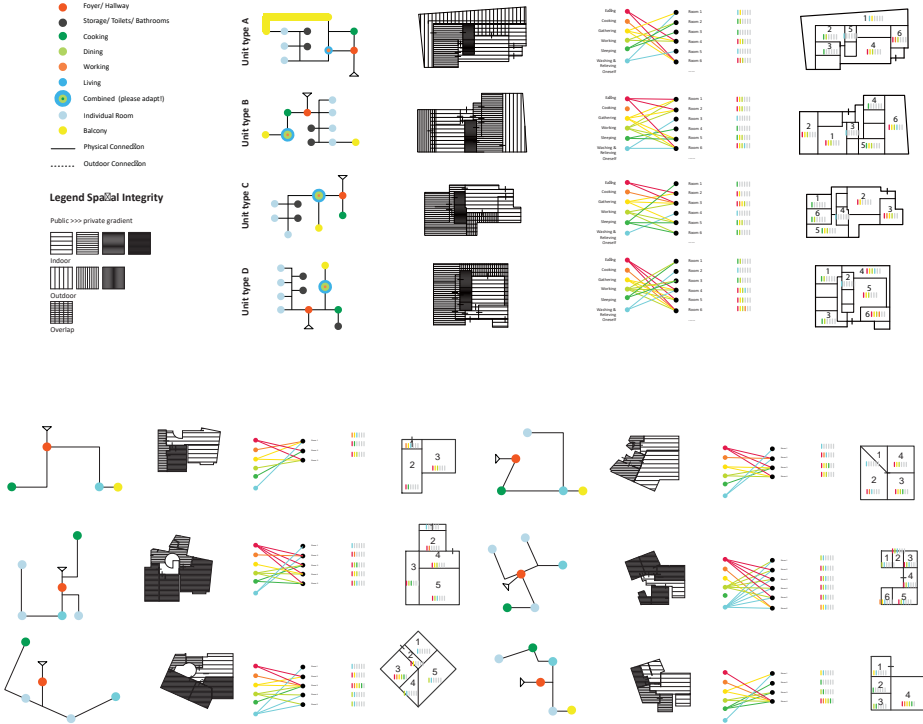




↑Apartment Studies
‘Park Grove’
Miami, USA 2018
Architect: OMA
Emir Hamzah Mustaffa

↓Apartment Studies
‘Torres del Parque’
Bogota, CO 1970
Architect: Rogelio Salmona
Lee Xin Yun Mavis

↓Apartment Studies
‘Bulevar Residence’
Sevilla, ES 2019
Architect: Gabriel Verd / Buro 4 Arq.
Liu Yimin



CASE STUDY ‘CIDCO’
Low Cost Housing
Mumbai, IN 1993
Architect: Raj Rewal
Nabila Larasati Pranoto

