



WILD

KATONG

2

0

2

5

ASD-OS 2 SPRING

ASD-OS 2 SPRING

Studio Title: *Wild Katong; Spores*

Instructor: Khoo Teik Rong (RSP)

Studio Collaborators:

- URA
- Andrew Lee (SAA)
- Lee Tat Haur (TAt)

Description of Studio:

Considering the Identity of Katong as a Place

The studio seeks to build upon the themes and ideas explored in the “In-Between Katong” Studio (Term 6 Options 1 2024). Interrelating physical setting, activities, and meanings (Edward Relph 1976). The studio explored the possibilities and potentials of urban interventions in the often-forgotten gap spaces of Katong, tapping into its historic heritage, nostalgic charm and lively streets.

Wild Katong Part 1: Spores (Individual)

Our investigations in the previous studio showed us that there is a wild ecology latent within Katong, teeming with potential to be developed. The focus of the studio will be to delve deeper into these investigations and propose a series of small interventions “Spores” that will be a prominent part of this year’s Archifest.

Inspired by the everyday wildlife of the historic and modern Katong – These micro installations sprout organically from the Katong urban ecology like Spores.

Spores Key Characteristics:

1. Micro-Units: Extremely small, intricately designed structures (approx. 4-6 meters squared).
2. Urban Interventions: Inserted into overlooked city spaces (alleys, rooftops, vacant lots).
3. Experimental Materials: Utilizing recycled, low-cost materials.
4. Adaptable Configurations: Modular, flexible designs.
5. Lightweight and Mobile

Wild Katong Part 2: Mothership (Small Groups)

There will be 4 Strategic Zones that we will be conducting closer examination as micro-sites for Archifest 2025 (tentatively July) for a larger installation:

1. Marine Parade MRT Green
2. Old Police Station/Indigo Green
3. Spartans Gym
4. Roxy Pedestrian Mall

In the second part of the semester, we will be looking for the individual Spores to resonate and interact with these 4 Motherships. The relationship between the Spores and the Motherships will be teased out organically during the semester.

Studio Design Philosophy/Theoretical Framework/Expectations

The studio will focus on XS/XSS-scale pop-ups, pushcarts, and street furniture, with programming shaped by stakeholder engagement. It will emphasize materiality, thoughtful detailing and construction, while exploring the emotional impact of installations in evoking memories and feelings. These concepts will be deeply examined through iterative drawings and models – in the search for meaning.

Key References:

1. Land Art/As-Found Movement
2. Wild Urban Ecology - Fuminori Nousaku and Mio Tsuneyama
3. Studies in Organic - Kengo Kuma
4. Point, Line and Surface – Kengo Kuma
5. Made in Tokyo/Pet Architecture - Atelier Bow Wow
6. Graphic Anatomy – Atelier Bow Wow
7. Small Projects – Kevin Mark Low
8. Kissing Architecture – Sylvia Lavin
9. Architecture and Affect – Lilian Chee

Studio Schedule (Tentative*)

Week	Date	Program	Remark
1	4-Feb	Introduction/Lecture Series	Briefing of assignment after Lecture
		Lecture 1: Studio Recap/Engaging Stakeholders/Small Projects/ Observing (Teik Rong)	Documentation/Stakeholder Engagement
	6-Feb	Site Walk Observing Tanjong Katong	Postcards – Heritage, Memory and Materiality
		Site Mappings/Stakeholder Engagement	
2	11-Feb	Lecture Series	Briefing of assignment, show and tell of previous assignment after Lecture.
		Lecture 2: Urban Tectonics/Part to Whole (Tat Haur)	Formulating the Inquiry
	13-Feb	What is the Project?	
		Small Structures	
3	18-Feb	Lecture Series	Briefing of assignment, show and tell of previous assignment after Lecture.
		Lecture 3: Drawing Tectonics (Andrew)	
	20-Feb	Design Refinement	
4	25-Feb	Lecture Series	<i>Capstone mid-terms</i>
		Lecture 4: Dollhouses; Making and Meaning	
	27-Feb	Drawing Development/Fabrication	
5	4-Mar	Mid Term Review	1 x A0 Drawing
		Spore Installation Proposals	1 x Dollhouse Prototype
	6-Mar	Projections	
6	10-Mar - 14-Mar	Recess Week	

18-Mar **Refinement of Proposals**

7

20-Mar **Refinement of Proposals**

25-Mar **Refinement of Proposals**

8

27-Mar **Refinement of Proposals**

1-Apr **3/4 Review**

Review of Proposals prior to production push

Spore x Mothership Proposals

9

3-Apr **Fabrication**

8-Apr **Fabrication**

10

10-Apr **Fabrication**

Capstone Finals

15-Apr **Fabrication**

11

17-Apr **Fabrication**

22-Apr **Fabrication**

12

24-Apr **Fabrication**

29-Apr **Final Review**

1 x Dollhouse 1:1

Spore Installation Proposals

1x A0 Drawing

13

Mothership Installation Proposals

Locations



Spartans

Old Police Stn/
Indigo/Starbucks

Roxy PM

Marine Parade MRT Green

**SINGAPORE
ARCHIFEST**

Proposed SUTD installations



1600 sqm (20m wide)

Marine Parade MRT Green

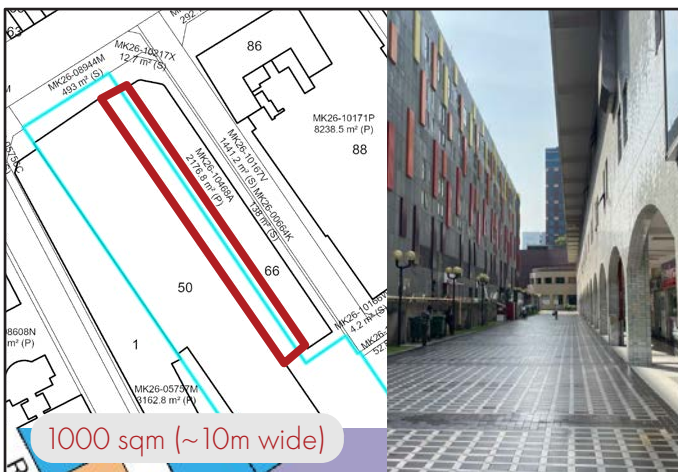
- Design brief: Park amenities, seating, folly, play feature, chess, etc
- *URA will initiate discussions with NParks on access/maintenance*



500 sqm

Old Police Station/Indigo green

- Design brief: Public seating/furniture/play feature
- *URA will initiate discussions with Indigo on access/maintenance; **starbucks for possible collab***



1000 sqm (~10m wide)

Roxy Pedestrian Mall

- Design brief: Movable festival furniture, eg. sales kiosk/tables benches
- *URA will initiate discussions with Roxy on access/maintenance*



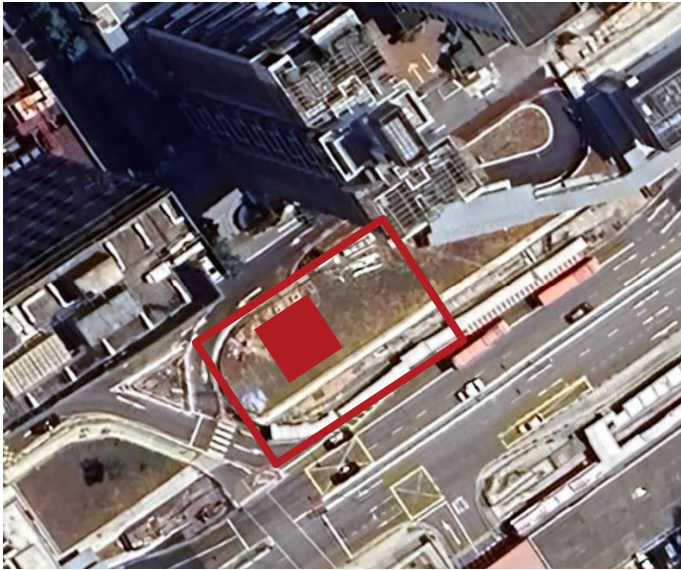
250 sqm

Spartan

- Design brief: Community boxing space/festival tent
- *URA will initiate discussions with Spartans on design, access/maintenance*

Marine Parade MRT Green

10 x 10M



Design Brief (tentative)

This node comprises open space (zoned as park) above the MRT station—a key gateway into the Joo Chiat/Marine Parade area.

An installation here has the potential to form a key orientation feature (“meet me at the XXX”) and a welcoming gesture to the historic neighbourhoods nearby.

It should leverage the park setting to introduce elements of play, gathering, or wellness. The installation could allude to various elements of local culture and history, such as the

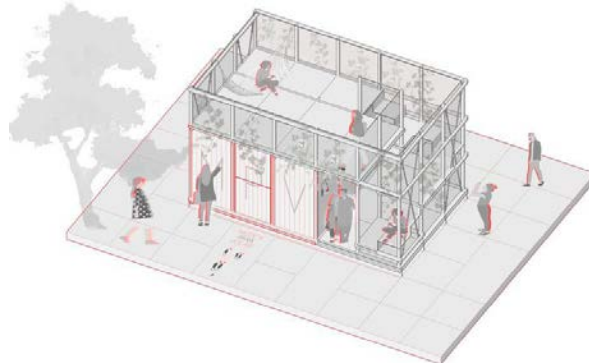
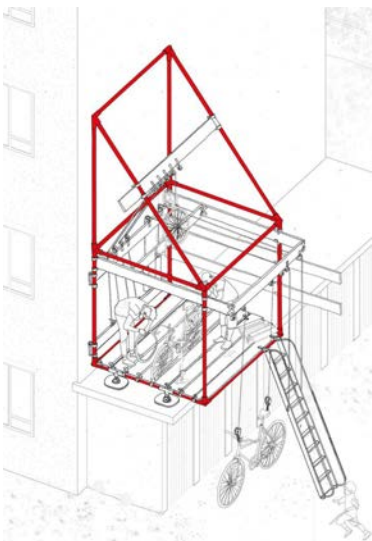
Technical Brief

Site area:
1600 SQM (20 x 80m)

Possible pavilion/installation size:
Can consider full-height sheltered space, subject to NParks/LTA support

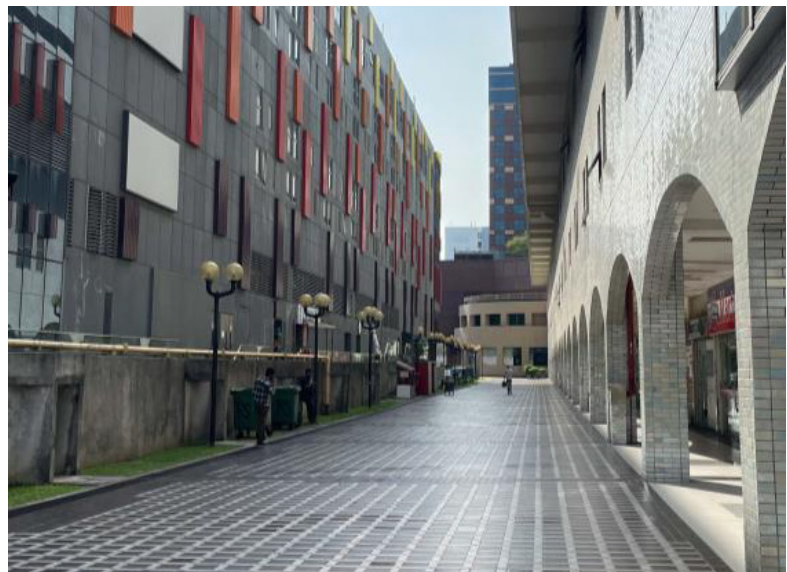
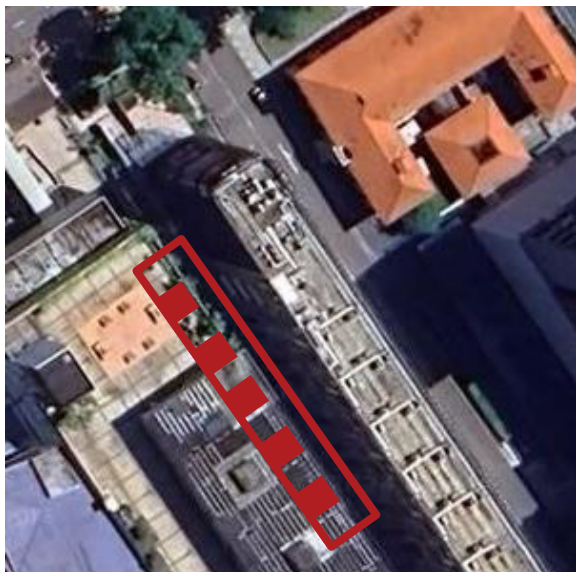
Availability of power/water:
To be confirmed

Precedent:



Roxy Pedestrian Mall

5 X 5M



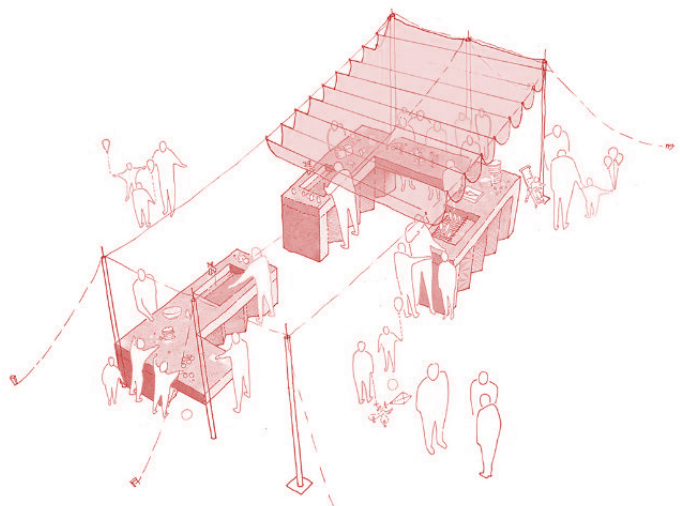
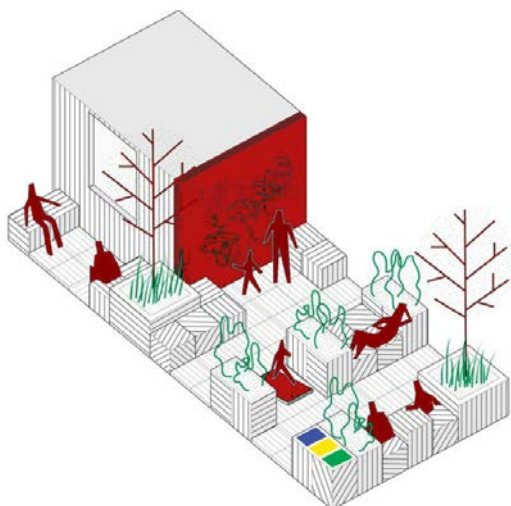
Design Brief (tentative)

This is a well-used and attractive pedestrian mall within the premises of Roxy Square development, which also serves as a firefighting access way. It is flanked by a colonnaded covered walkway with local shops.

The installation here is envisioned to comprise lightweight and moveable elements akin to festival furniture. These can be customised to the needs of the various businesses along the pedestrian mall and can be easily shifted to keep the Fire Engine Access (FEA) clear.

There is potential to design the furniture to support activation events such as flea markets, fashion shows, and food festivals. These events can be activated by the diverse stakeholders of Katong-Joo Chiat.

Precedent:



Technical Brief

Site area:
1000 SQM (10m wide, up to 100m long)

Possible pavilion/installation size:
series of lightweight moveable elements akin to festival furniture

Availability of power/water:
To be confirmed.

Old Police Station/Indigo green

10 X 10M



Design Brief (tentative)

This site occupies a key vantage point along the main thoroughfare of East Coast Road, fronting the conserved police station within the premises of Katong Square. There is heavy foot traffic from the nearby i12 junction and Katong Square's sheltered public space.

This could be an ideal site for an HQ pavilion for Archifest. It should be designed sensitively to relate to the conserved two storey building.

There could be programmatic synergies with the adjacent Baba Chews restaurant and Starbucks.

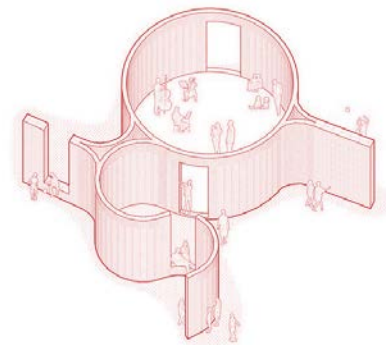
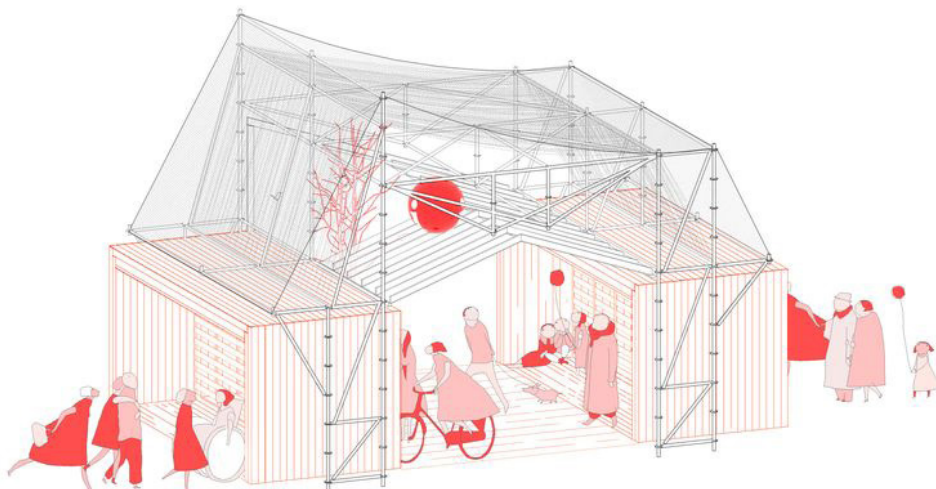
Technical Brief

Site area:
500 SQM (20x25m)

Possible pavilion/installation size:
Can consider full-height sheltered space, subject to building owner support.

Availability of power/water:
To be confirmed.

Precedent:



Spartans Boxing Club, Joo Chiat

10 X 10M



Design Brief (tentative)

This site comprises an openair car park and driveway fronting a mixed-use building. The ground floor houses a boxing gym, furniture shop, and auto workshop.

Any installation here must be transformable to support periodic activation whilst maintaining the space's primary function as a car park for the development.

Spartan Gym has expressed interest in organising street festivals here for the community. Neighbouring units (Lim's and Fu Ee) occasionally use the space for religious festivals, such as Hungry Ghost prayers.

Technical Brief

Site area:
250 SQM (10 x 25 m)

Possible pavilion/installation size:
Transformable structure designed based on the programmatic needs of development units.

Availability of power/water:
To be confirmed.

Precedent:

